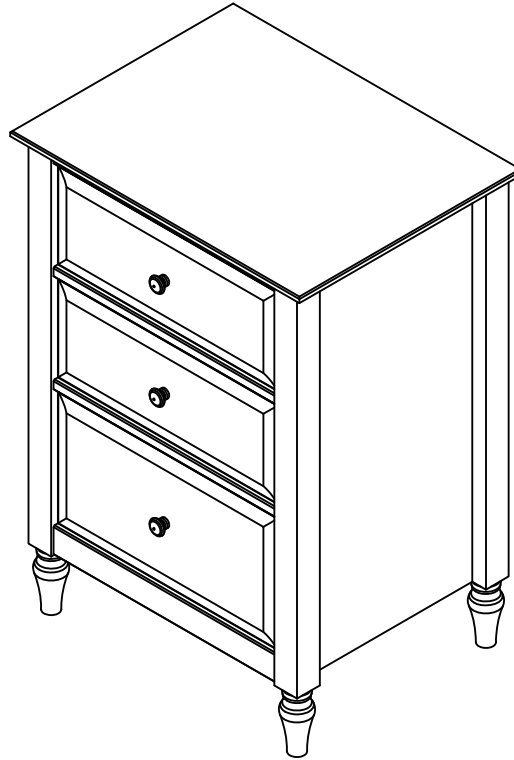


Since 1976
ADEPTUS
ASSEMBLY INSTRUCTIONS

78102 - Cottage 3 Drawer End Table



IF YOU NEED ASSISTANCE, PLEASE CALL OUR CUSTOMER SERVICE LINE:

TOLL FREE 1.888.ADEPTUS (1.888.233.7887)
MON.-FRI. 10 A.M. TO 4 P.M. EST; CLOSED HOLIDAYS

PLEASE HAVE THE FOLLOWING INFORMATION AVAILABLE AT THE TIME OF YOUR CALL:

1. PRODUCT NAME AND STOCK NUMBER
2. PLACE AND DATE OF PURCHASE
3. PO CODE NUMBER FROM THE BOTTOM RIGHT OF THIS PAGE

IF CALLING AFTER HOURS, OR NO ONE IS AVAILABLE TO TAKE YOUR CALL,
PLEASE LEAVE YOUR NAME AND CONTACT INFORMATION. YOUR CALL WILL
BE RETURNED AS SOON AS POSSIBLE.

**REPLACEMENT PARTS AND ADDITIONAL INFORMATION MAY ALSO BE PROVIDED
BY YOUR RETAILER.**

ASSEMBLY TIPS:

1. DO NOT GLUE ANY PARTS WHEN ASSEMBLING THIS UNIT, UNLESS INSTRUCTED TO DO SO.
2. ASSEMBLE ON A HARD CLEAN SURFACE USING ONLY A TOWEL OR THE CARTON TO PROTECT THE FINISH. DO NOT ASSEMBLE ON CARPET.
3. DO NOT USE POWER TOOLS. POWER TOOLS OVER-TIGHTEN SCREWS AND CAUSE DAMAGE TO THE UNIT.

**SAVE THESE ASSEMBLY INSTRUCTIONS AND THE BOX UNTIL COMPLETELY SATISFIED
WITH YOUR PRODUCT.**

THANK YOU FOR YOUR PURCHASE, AND WELCOME TO ADEPTUS!

PLEASE ACTIVATE YOUR PRODUCT WARRANTY BY VISITING: WWW.ADEPTUS.COM

Many People, One Thought

PROVIDING QUALITY WOOD FURNITURE AT AN AFFORDABLE PRICE HAS BEEN A GROUP EFFORT. FROM CONCEPT TO PRODUCT DESIGN, MANUFACTURING AND RETAILING, EACH AREA FOCUSES ON THE DETAILS THAT WILL ASSURE YOU A LOW PRICE. BUT NEVER AT THE EXPENSE OF FUNCTION, STYLING, OR GOOD SENSE.

A "READY - TO - ASSEMBLE" ITEM REDUCES TRANSPORTATION AND WAREHOUSING COSTS WHICH HELP YOUR RETAILER KEEP THEIR PRICES REASONABLE. NOW, YOU ARE JOINING "TEAM ADEPTUS" WITH THE FINAL STEP, ASSEMBLY.

- YOU ASSEMBLE, YOU SAVE •

WELCOME TO ADEPTUS!

Parts of this product are real SOLID wood:

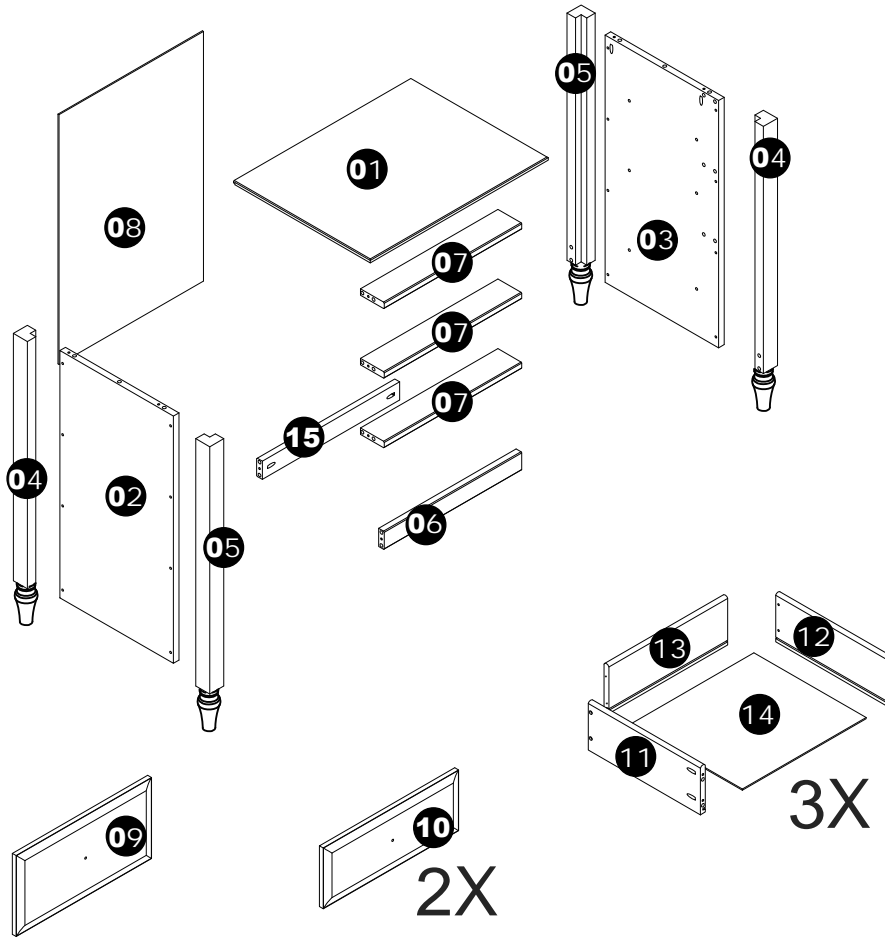
We inspect all wood and follow guidelines to pass quality inspections. Real solid wood has knots, small cracks, and what may look like blemishes. These characteristics are a natural by-product of producing furniture from natural material.


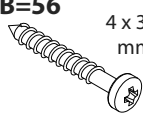

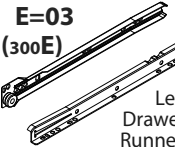
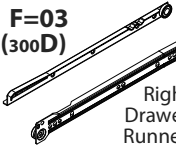
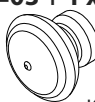

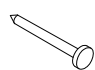
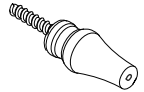
We take extra care with our drawer parts.

We use real wood drawer sides that are finely sanded to prevent snags to stored clothing. We do not paint the drawer sides to protect your clothing from chemical odors and residue.

Parts List Legend

#	Description	Qty
01	Top	1
02	Left side panel	1
03	Right side panel	1
04	Left rear & right front legs	2
05	Right rear & left front legs	2
06	Bottom front crossbar	1
07	Drawer crossbars	3
08	Back panel	1
09	Large drawer front	1
10	Small drawer fronts	2
11	Left drawer sides	3
12	Right drawer sides	3
13	Drawer sides	3
14	Drawer bottoms	3
15	Bottom back crossbar	1

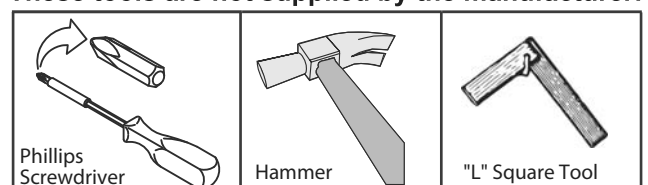


A= 42  8 x 30 mm Dowel	B=56  4 x 30 mm Screw	D=23  3.5 x 14 mm Screw	E=03 (300E)  Left Drawer Runner	F=03 (300D)  Right Drawer Runner	G=03 + 1 xtra  Knob
H=12  6 x 10 mm Screw	K=18 + 2 xtra  Back Panel Nail	O=04  Foot			

! IMPORTANT INFORMATION:

- Do not use power tools for assembly.
- Assembly is easier with 2 people.
- Perform assembly steps in order as listed.
- Some parts do not have pre-drilled "pilot" holes for screws. This is intentional to optimize the grip of the screw on the wooden part and prevent possible stripping.
- Individual wooden & MDF parts are not sticker-ed with corresponding part numbers. This is intentional to prevent possible damage to the finish and allow you additional cost savings. The above illustration should be used together with the Parts Lists legend to identify the parts for assembly.

These tools are not supplied by the manufacturer:



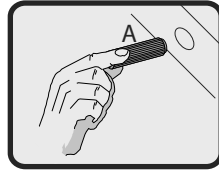
1

PREPARE PARTS BY INSERTING DOWELS

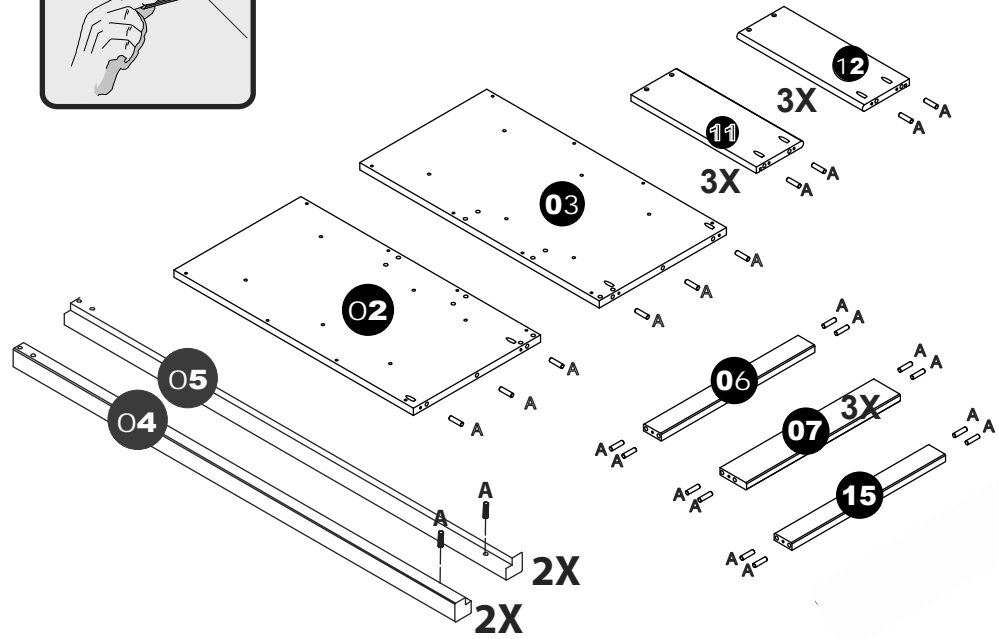
A=42

8 x 30 mm

Dowel



NOTE: Both dowels (part A) and pre-drilled dowel holes can vary slightly. Dowels (part A) should fit snug enough into the dowel hole that it will stay without falling out. However, it should not be forced if it is too tight to insert by hand. If a dowel (part A) does not fit properly into a dowel hole, try another until the proper fit is found. Please **DO NOT** use glue to secure dowels (part A). If you find it necessary for proper completed assembly, we suggest that you call and request additional dowels (A).

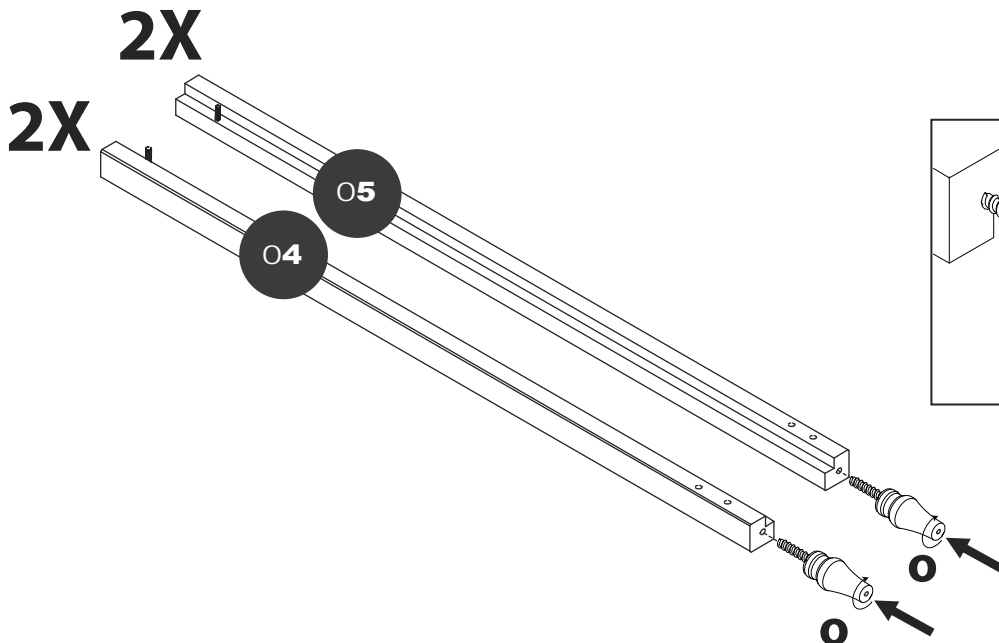


Prepare the parts for assembly by inserting dowels (part A) into the pre-drilled dowel holes in the following parts:

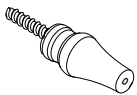
- Insert 3 dowels (part A) into the top of each side panel; 1 left side panel (part 02) and 1 right side panel (part 03).
- Insert 1 dowel (part A) into the top of each of the 4 legs; 2 Part 04 legs and 2 Part 05 legs.
- Insert 2 dowels (part A) into the front of each drawer side; 3 left drawer sides (part 11) and 3 right drawer sides (part 12).
- Insert 2 dowels (part A) into both ends of each crossbar; 3 drawer crossbars (part 07) and 2 bottom crossbars (parts 06 & 15).

2

ATTACH FEET TO LEGS



O=04

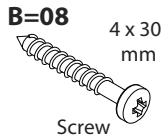
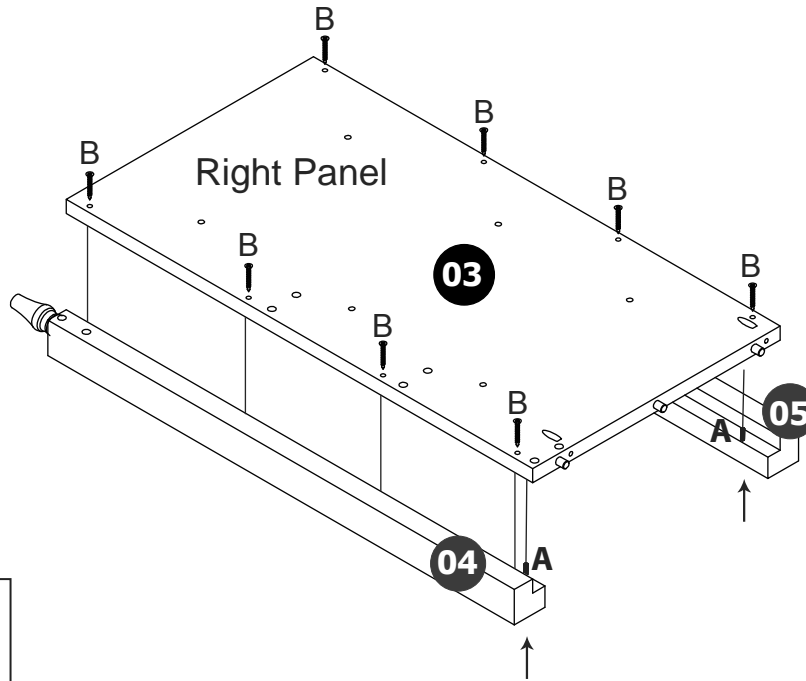
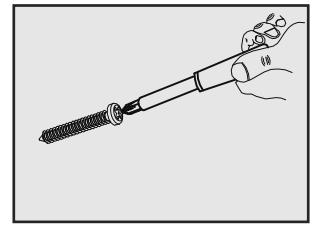


Foot

Attach the 4 feet (part O) to the 4 legs (2 of part 04 and 2 of part 05) by screwing the foot (part O) into the bottom of each leg (parts 04 & 05) clockwise just until tight. Do not try to force or over-tighten the feet as this could cause the wood to split.

3

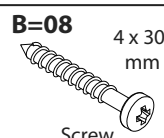
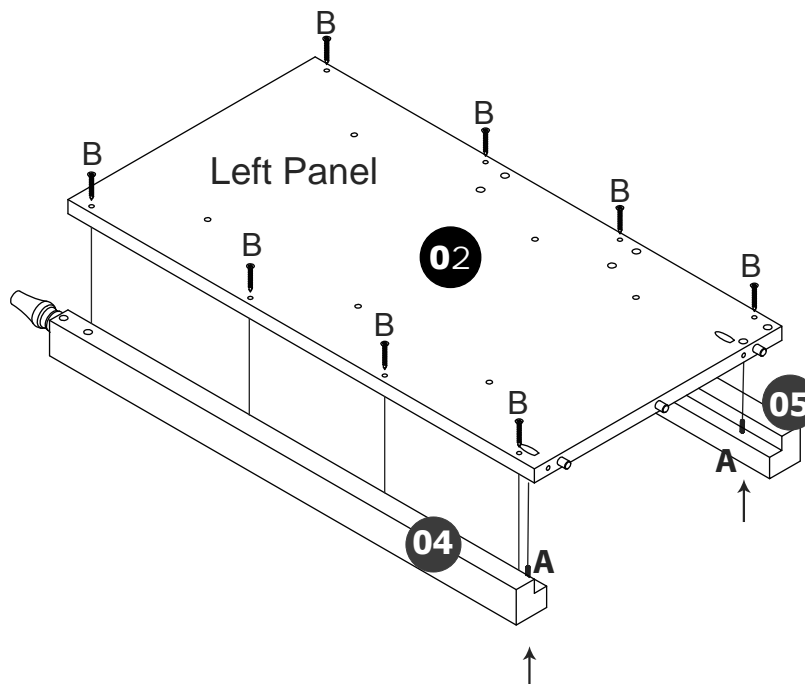
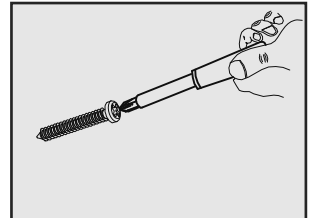
ATTACH LEGS TO THE RIGHT SIDE PANEL



- Attach the Right rear leg (part 05) and the Right front leg (part 04) to the Right side panel (part 03) by first aligning the dowels (part A) you inserted into the legs (parts 04 & 05) in step 1 with the corresponding dowel holes on each side of the Right side panel (part 03).
- Once aligned, push the legs (parts 04 & 05) flush to the Right side panel (part 03).
- Secure the legs (parts 04 & 05) to the Right side panel (part 03) using 8 of the part B screws as shown.
- Install 4 screws (part B) into each leg (parts 04 & 05), as shown, just until tight. Do not force or over-tighten screws (part B) as this could cause the wood to split.

4

ATTACH LEGS TO THE LEFT SIDE PANEL



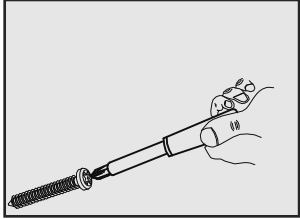
- Attach the Right rear leg (part 05) and the Right front leg (part 04) to the Right side panel (part 03) by first aligning the dowels (part A) you inserted into the legs (parts 04 & 05) in step 1 with the corresponding dowel holes on each side of the Right side panel (part 03).
- Once aligned, push the legs (parts 04 & 05) flush to the Right side panel (part 03).
- Secure the legs (parts 04 & 05) to the Right side panel (part 03) using 8 of the part B screws as shown.
- Install 4 screws (part B) into each leg (parts 04 & 05), as shown, just until tight. Do not force or over-tighten screws (part B) as this could cause the wood to split.

5

ATTACH LEFT DRAWER RUNNERS (300E) TO LEFT SIDE PANEL



NOTE: The end of the left drawer runners (300E) (part E) with the wheel should be on the front side of the left side panel (part 02).

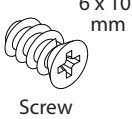


E=03
(300E)



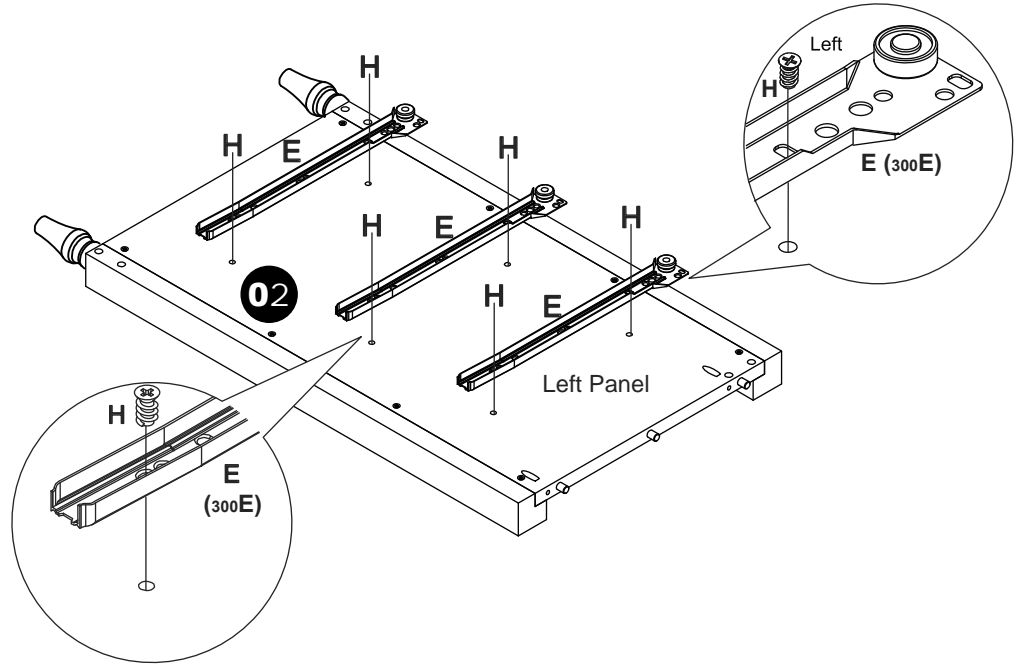
Left
Drawer
Runner

H=06



Screw

- Attach 3 (300E) left drawer runners (part E) to the left side panel (part 02).
- Please use care to align the (300E) runners (part E) correctly with the pre-drilled holes in the left side panel (part 02), as shown in the enlarged illustrations.
- Secure the (300E) left drawer runners (part E) to the left side panel (part 02) using 6 of the part H screws.



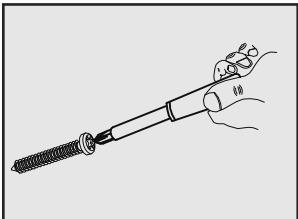
Screws (part H) should just be tight. Do not try to force or over-tighten as this may cause damage to the panel or runners.

6

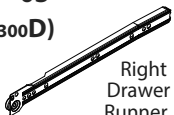
ATTACH RIGHT DRAWER RUNNERS (300D) TO RIGHT SIDE PANEL



NOTE: The end of the right drawer runners (300D) (part F) with the wheel should be on the front side of the right side panel (part 03).



F=03
(300D)



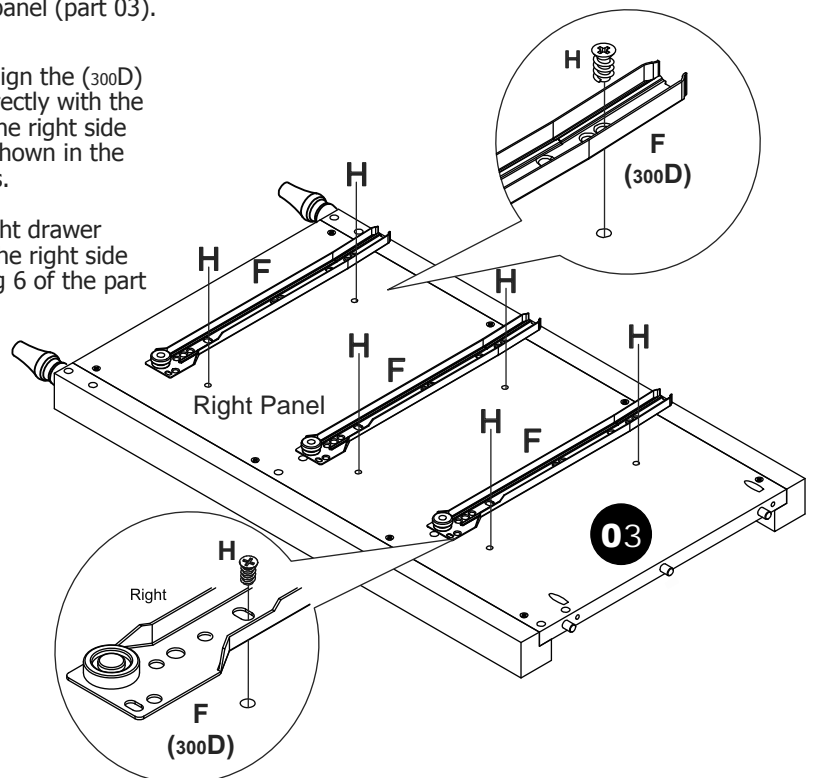
Right
Drawer
Runner

H=06



Screw

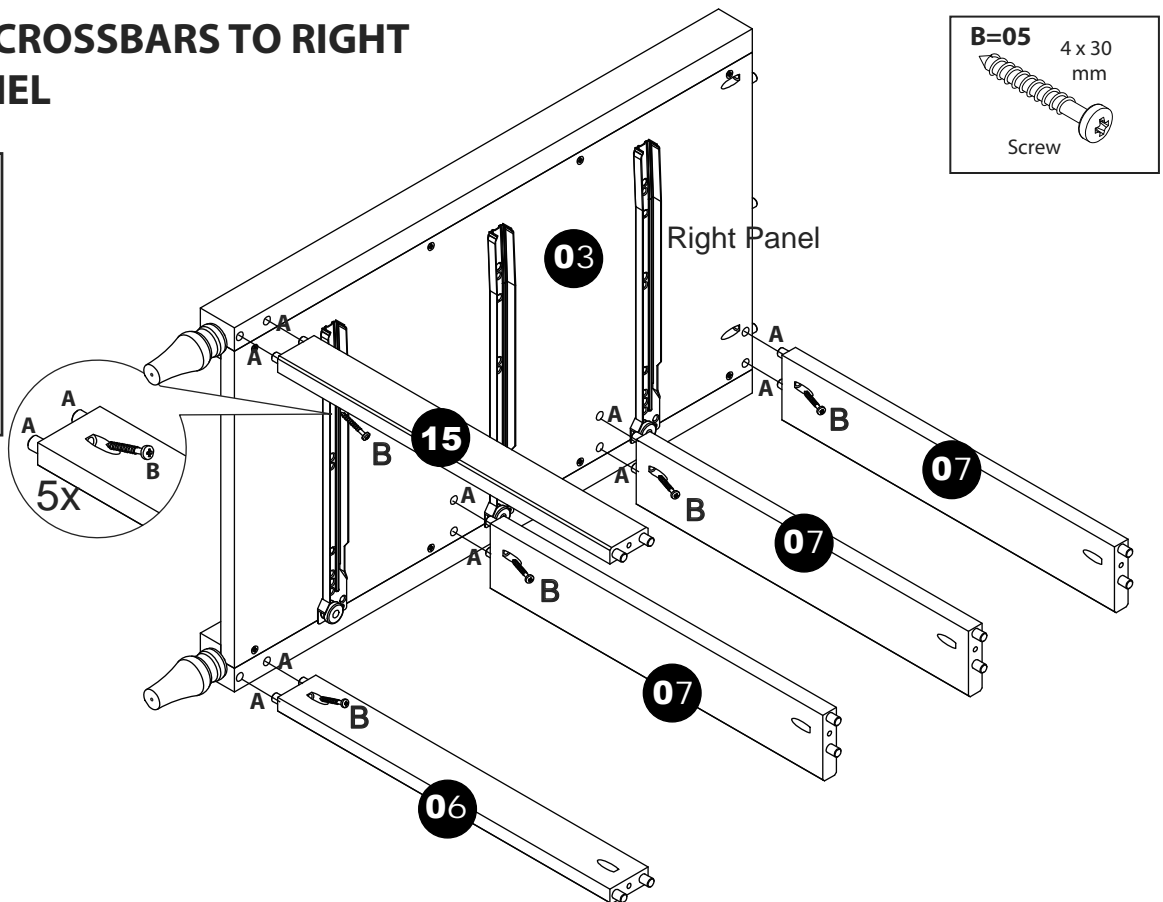
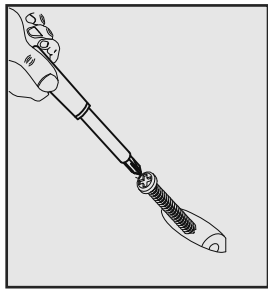
- Attach 3 (300D) right drawer runners (part F) to the right side panel (part 03).
- Please use care to align the (300D) runners (part F) correctly with the pre-drilled holes in the right side panel (part 03), as shown in the enlarged illustrations.
- Secure the (300D) right drawer runners (part F) to the right side panel (part 03) using 6 of the part H screws.



Screws (part H) should just be tight. Do not try to force or over-tighten as this may cause damage to the panel or runners.

7

ATTACH CROSSBARS TO RIGHT SIDE PANEL



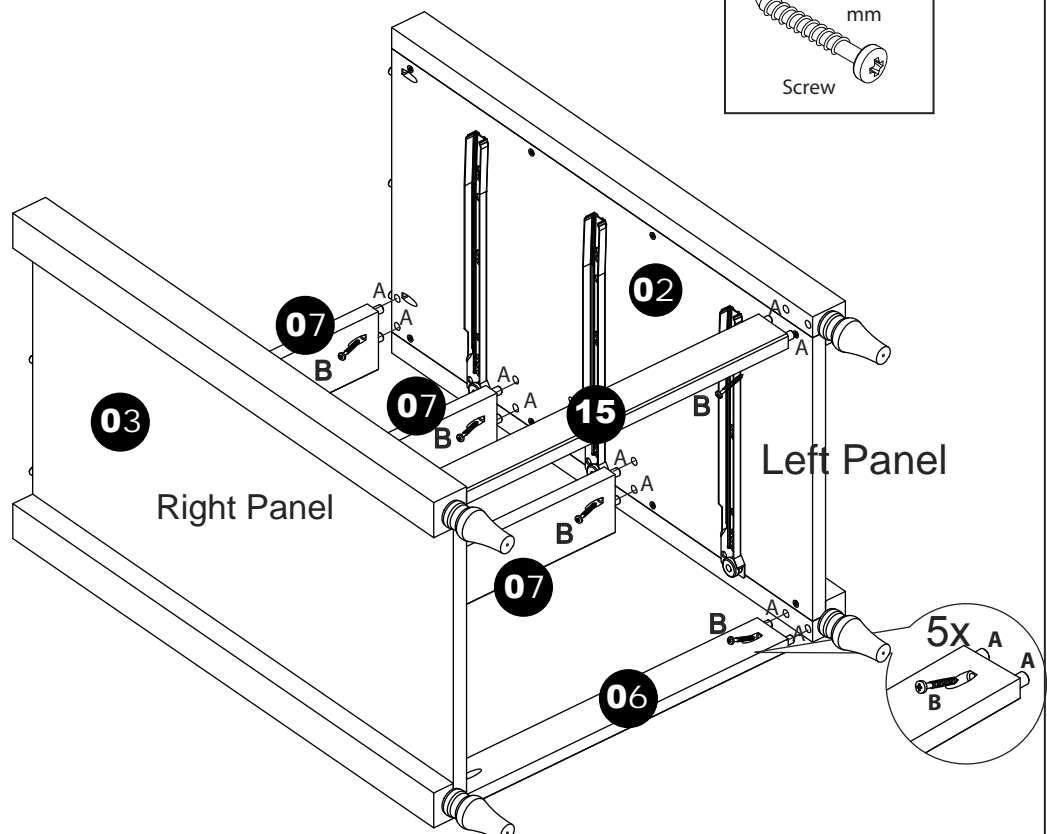
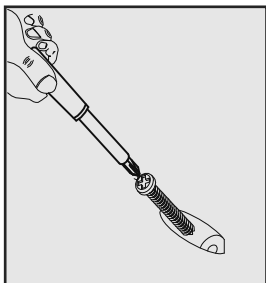
- Attach all crossbars (parts 06, 07 & 15) to the right side panel (part 03) by first aligning the dowels (part A) you inserted in step 1 on each crossbar (parts 06, 07 & 15) with the pre-drilled dowel holes in the right side panel (part 03).
- Once aligned, push all crossbars (parts 06, 07 & 15) into the the right side panel (part 03) until flush.
- Secure each crossbar (parts 06, 07 & 15) using 5 of the part B screws.
- The part B screws should be just tight. Do not force or over-tighten as this could cause damage to the panel or crossbars.

8

ATTACH LEFT SIDE PANEL TO CROSSBARS



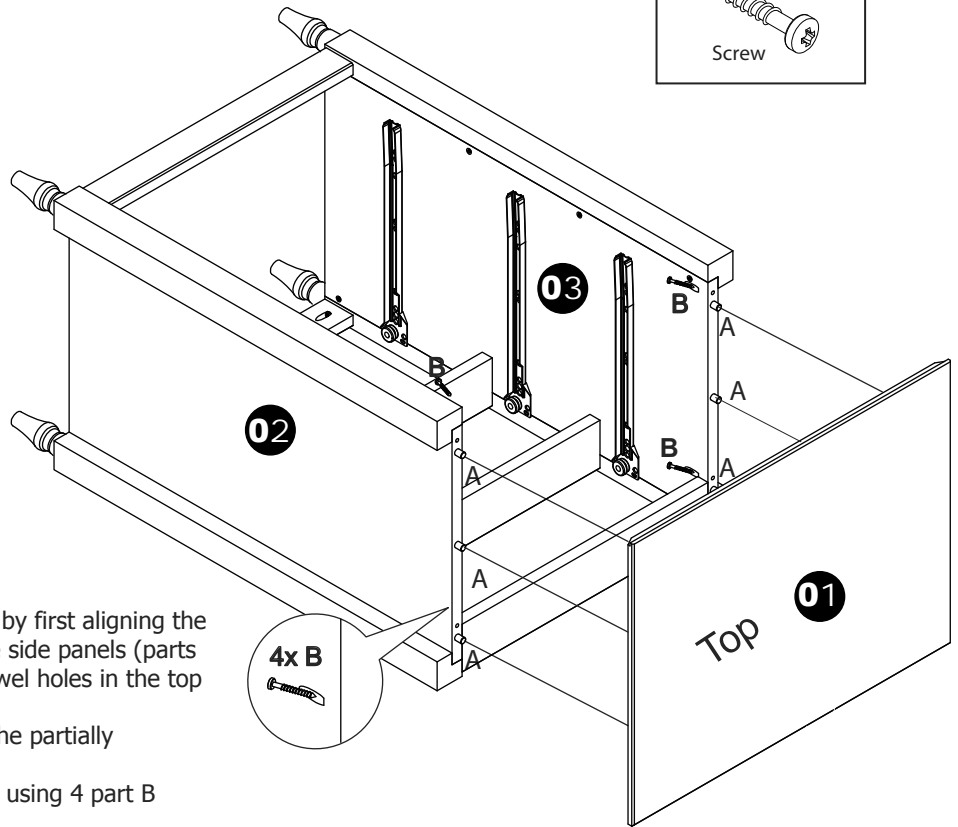
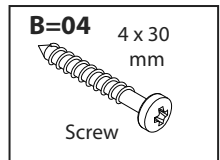
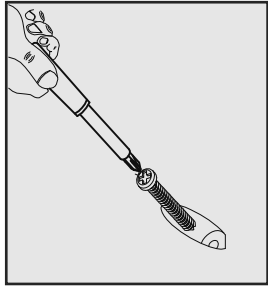
NOTE: Do not attempt this step with the unit upright. It should be flat on its front side on a hard, clean surface.



- Attach all crossbars (parts 06, 07 & 15) to the left side panel (part 02) by first aligning the dowels (part A) you inserted in step 1 on each crossbar (parts 06, 07 & 15) with the pre-drilled dowel holes in the left side panel (part 02).
- Once aligned, push all crossbars (parts 06, 07 & 15) into the the left side panel (part 02) until flush.
- Secure each crossbar (parts 06, 07 & 15) using 5 of the part B screws.
- The part B screws should be just tight. Do not force or over-tighten as this could cause damage to the panel or crossbars.

9

ATTACH THE TOP PANEL



- Attach the top panel of the unit (part 01) by first aligning the 6 dowels (part A) that you installed in the side panels (parts 02 & 03) in step 1 with the pre-drilled dowel holes in the top panel (part 01).
- Once aligned, push the the top panel to the partially assembled unit until flush.
- Secure the top panel (part 01) to the unit using 4 part B screws on each corner, as shown.
- Screws (part B) should be tight, but do not force or over-tighten screws (part B) as this could cause damage to parts.

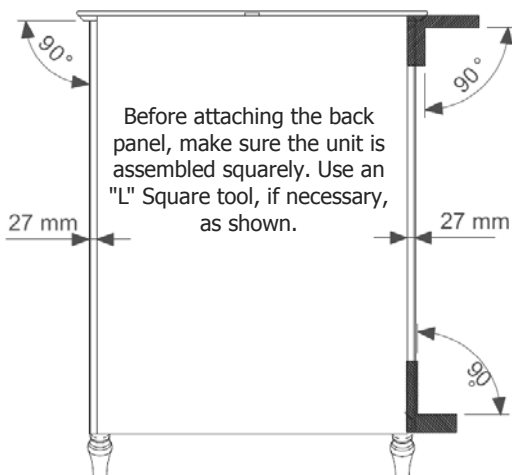
10

ATTACH THE BACK PANEL

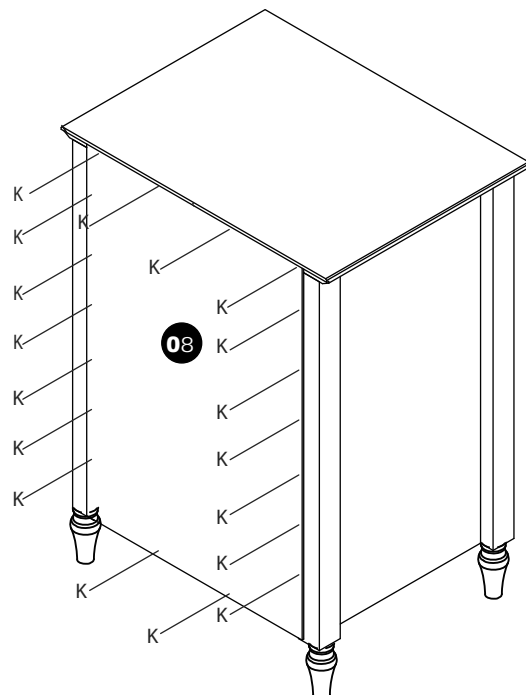


Use all back panel nails (part K) evenly spaced. They make the unit strong.

- First make sure the unit is assembled squarely. Use an "L" Square tool, if necessary.
- Once the unit is square, you must determine the square installation of the back panel. Use an "L" Square tool, if necessary.
- Once you have positioned the back panel (part 08) squarely, secure it to the unit using 18 of part K nails evenly spaced, as shown.
- It is very important that you utilize all 18 nails. It strengthens the unit.



K=18 + 2 extra

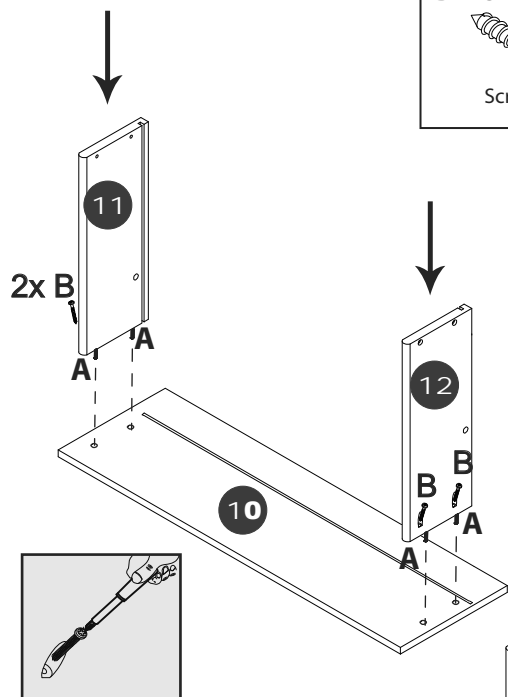


11 ASSEMBLE THE SMALL DRAWERS (2X)

B=18 4 x 30 mm Screw	G=02 Knob	E=02 (300E) Left Drawer Runner	F=02 (300D) Right Drawer Runner	D=12 3.5 x 14 mm Screw
-----------------------------------	---------------------	--	---	-------------------------------------

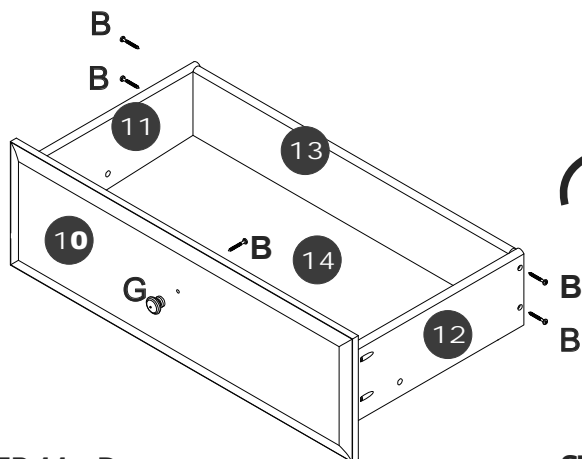
STEP 11 - A

- Using the dowels (part A) inserted into parts 11 and 12 in step 1, align the drawer sides (parts 11 & 12) with the drawer front (part 10).
- Make sure the groove for the drawer bottom (part 14) is precisely aligned on all 3 parts (10, 11 & 12) then push together until flush.
- Secure the drawer sides (parts 11 & 12) to the drawer front (part 10) using 2 screws (part B) on each side as shown in the illustration.
- Screws (part B) should be tight, but do not force or over-tighten as this could cause the wood to split.



STEP 11 - C

- Align the groove in the drawer back (part 13) with the drawer bottom (part 14) and in between the drawer sides (parts 11 & 12).
- Secure the drawer back (part 13) to the drawer using 2 screws (part B) on each side, as shown.



STEP 11 - D

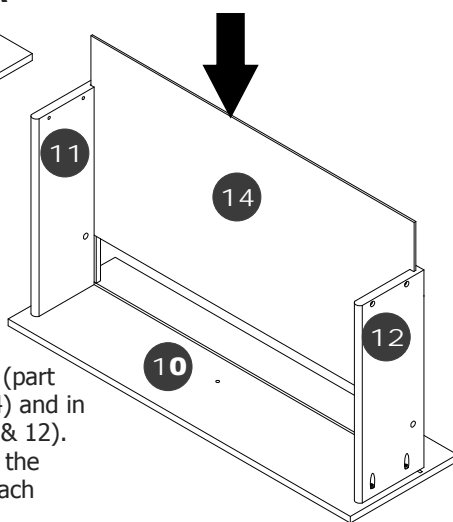
- Attach the knob (part G) to the drawer front (part 10) by inserting the screw (part B) through the back of the drawer front (part 10) and into the back of the knob (part G).



All screws (parts B & D) should be tight, but do not force or try to over-tighten as this may cause damage to the unit.

STEP 11 - B

- Slide the drawer bottom (part 14) into the grooves on parts 10, 11 and 12 as shown.

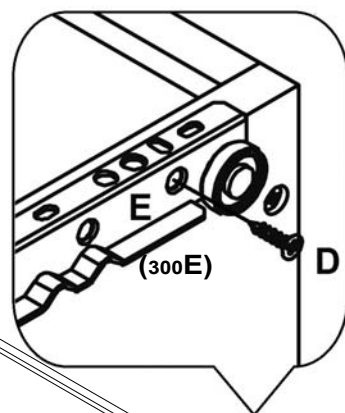


Turn
Drawer
Over

STEP 11 - E

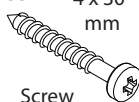
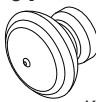
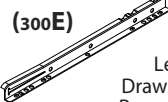
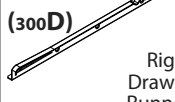

With the drawer upside down,

- Align the left drawer runner (300E) (part E) with the wheel on the outside toward the drawer back. **Make sure the opposite end is all the way forward touching the drawer front (part 10), as shown.**
- Secure the drawer runner (300E) (part E) to the drawer side (part 11) using 3 screws (part D).
- The first screw (part D) goes through the 3rd hole back from the drawer front (part 10) and into the drawer side (part 11).
- The second screw (part D) goes through the center hole of the runner (300E) (part E) into the drawer side (part 11).
- The third screw (part D) goes through the last hole in the runner (300E) (part E) closest to the drawer back (part 13) on the outside by the wheel as shown.
- Repeat these steps to attach the (300D) right drawer runner (part F) to the right drawer side (part 12).



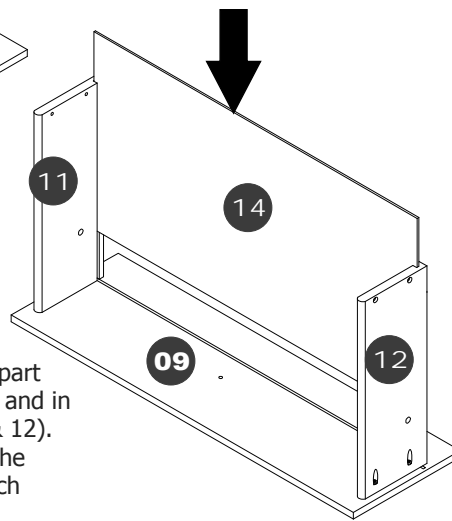
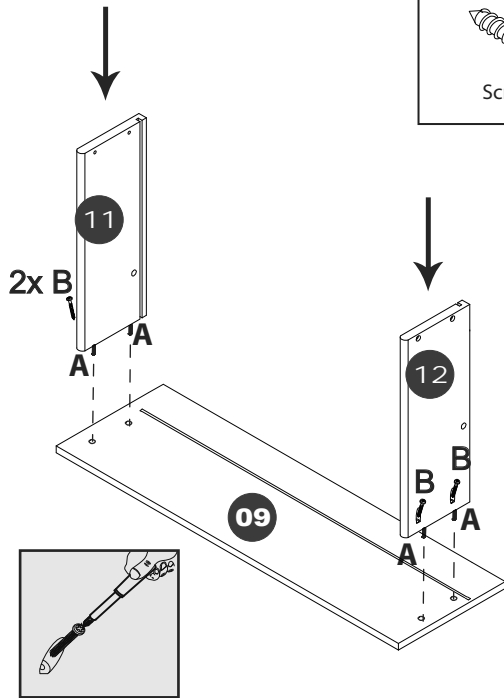
12

ASSEMBLE THE LARGE DRAWER

B=09 4 x 30 mm  Screw	G=01  Knob	E=01 (300E)  Left Drawer Runner	F=01 (300D)  Right Drawer Runner	D=06 3.5 x 14 mm  Screw
---	--	--	--	---

STEP 12 - A

- Using the dowels (part A) inserted into parts 11 and 12 in step 1, align the drawer sides (parts 11 & 12) with the drawer front (part 09).
- Make sure the groove for the drawer bottom (part 14) is precisely aligned on all 3 parts (09, 11 & 12) then push together until flush.
- Secure the drawer sides (parts 11 & 12) to the drawer front (part 09) using 2 screws (part B) on each side as shown in the illustration.
- Screws (part B) should be tight, but do not force or over-tighten as this could cause the wood to split.

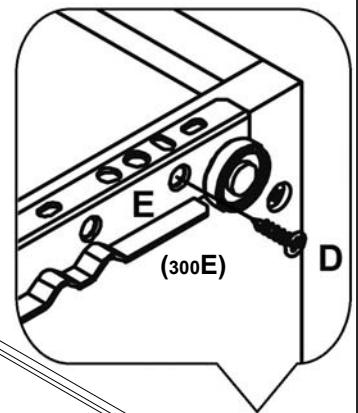
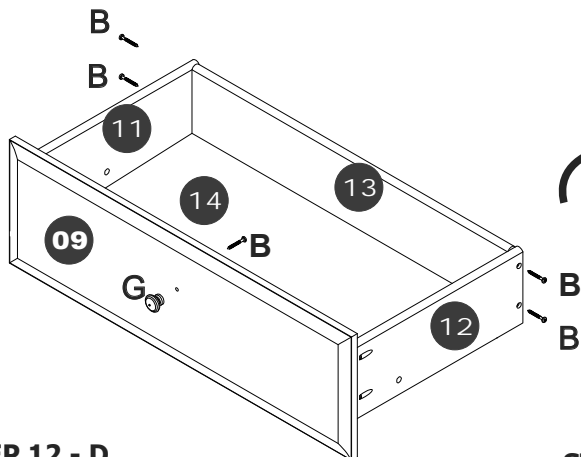


STEP 12 - B

- Slide the drawer bottom (part 14) into the grooves on parts 09, 11 and 12 as shown.

STEP 12 - C

- Align the groove in the drawer back (part 13) with the drawer bottom (part 14) and in between the drawer sides (parts 11 & 12).
- Secure the drawer back (part 13) to the drawer using 2 screws (part B) on each side, as shown.



STEP 12 - D

- Attach the knob (part G) to the drawer front (part 09) by inserting the screw (part B) through the back of the drawer front (part 09) and into the back of the knob (part G).

STEP 12 - E

With the drawer upside down,

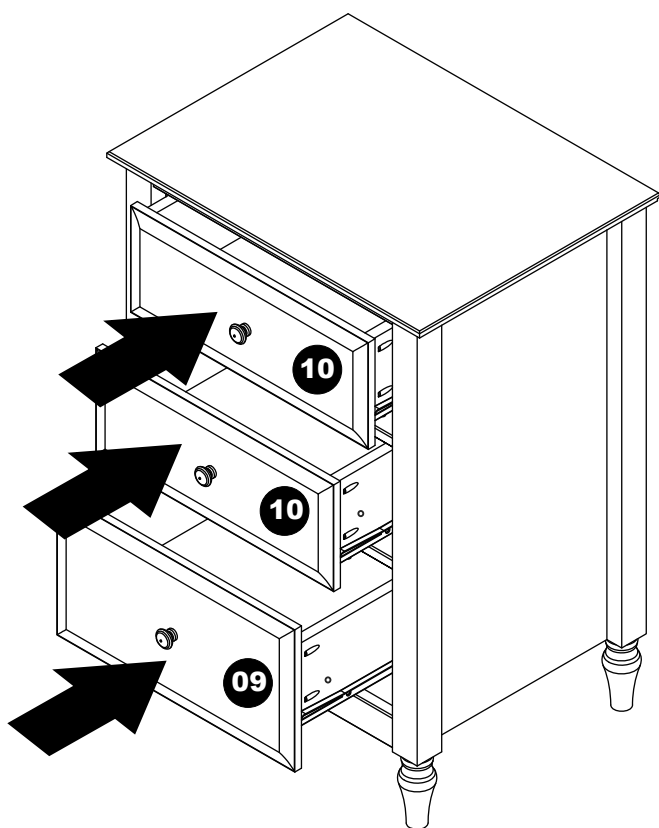
- Align the left drawer runner (300E) (part E) with the wheel on the outside toward the drawer back. **Make sure the opposite end is all the way forward touching the drawer front (part 09), as shown.**
- Secure the drawer runner (300E) (part E) to the drawer side (part 11) using 3 screws (part D).
- The first screw (part D) goes through the 3rd hole back from the drawer front (part 09) and into the drawer side (part 11).
- The second screw (part D) goes through the center hole of the runner (300E) (part E) into the drawer side (part 11).
- The third screw (part D) goes through the last hole in the runner (300E) (part closest to the drawer back (part 13) on the outside by the wheel as shown.
- Repeat these steps to attach the (300D) right drawer runner (part F) to the right drawer side (part 12).



All screws (parts B & D) should be tight, but do not force or try to over-tighten as this may cause damage to the unit.

13

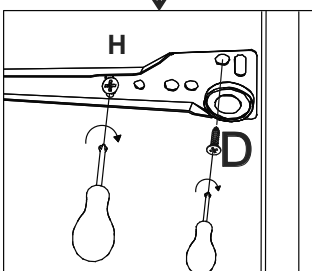
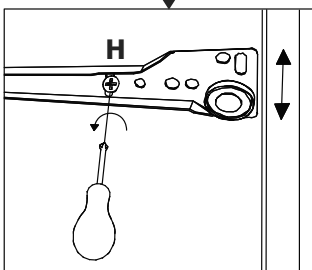
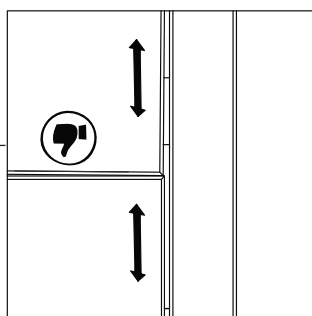
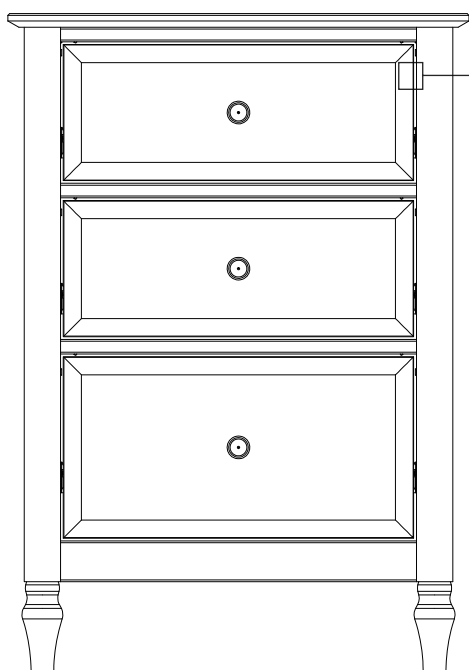
INSTALL THE DRAWERS X3



- Tilt the back of each drawer upward to get it past the wheels on the drawer runners.
- Once clear of the wheels, you can level the drawers and slide them in.

14

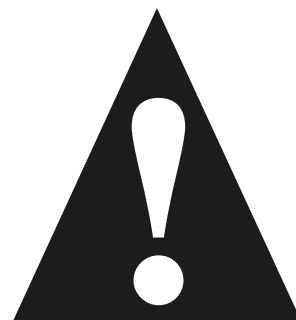
ADJUST DRAWER ALIGNMENT



D=06 3.5 x 14 mm



Screw



After completed assembly, it is necessary to adjust the drawer alignment to get the drawers perfectly square.

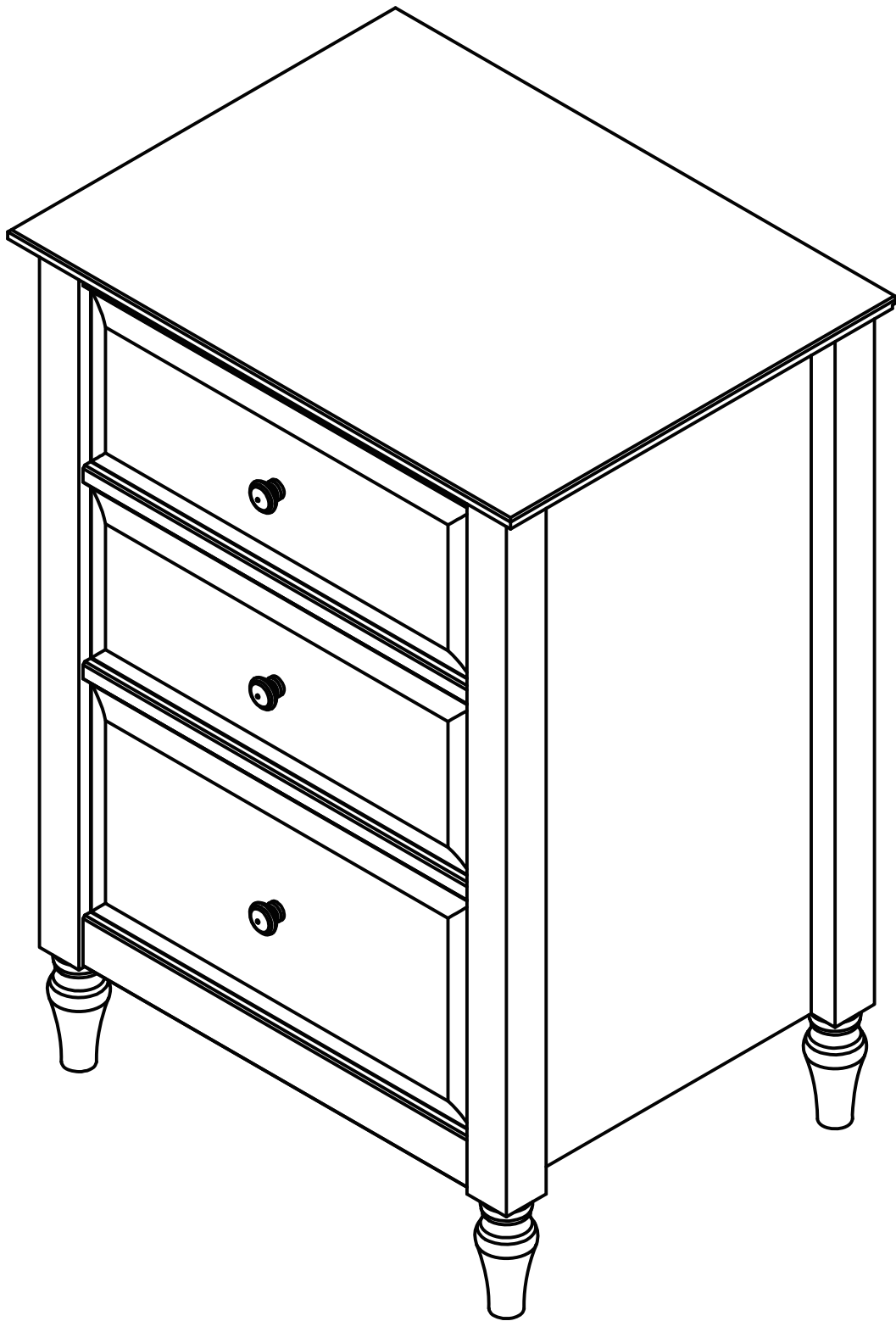
To adjust the drawer front position:

- Loosen the screw (part H) you used to install the drawer runner (either parts E or F) in steps 5 or 6, to the side panel (parts 02 or 03), depending on the side (left or right), as shown.
- With the screw (part H) loosened, you can make the necessary slight adjustments (up or down) to the drawer runner to achieve the proper drawer alignment.

Once the drawer alignment is square, secure the position of the drawer runners (parts E & F) to the side panels (parts 02 & 03) by re-tightening the part H screw and adding the part D screw as shown.

Complete these steps for both the left and the right side of each drawer.

Completed Assembly!



Care and use instructions:

Use for general home use as an end table, nightstand or side table / chest with storage. Clean with a damp cloth and wipe dry. Do not use harsh chemicals or abrasive sponges or cloths that could damage the finish.